

# Alaska Department of Fish and Game

Habitat Section  
Southeast Region



## 191-20-13600 Tributary 2

## ADDITION

**Water body name:**

**Survey date:** 7/23/2024

**Quad:** Icy Bay D2, D3

**Species & Lifestage:**

**Upper Reach Latitude:** 59.969426 **Longitude:** -141.707790

**Survey crew:** NJ, CD, DK

**Lower Reach Latitude:** 59.975320 **Longitude:** -141.705153

**Findings:** We surveyed this uncataloged stream to its upper extent using a backpack electrofisher, baited minnow trap, and GPS and captured juvenile coho salmon, Dolly Varden, and stickleback. The source stream flow is a large pond at waypoint 711, which then channelizes and meanders through a forested buffer. It has intermittent ponds and drops down to an open, large wetland complex which is connected to the Big River at high water (Table 1; Figures 1–3).

**Recommendations:** Add this uncataloged stream to the anadromous waters catalog for rearing coho salmon up to waypoint 709 (Figure 4).

**Nomination:** Pending

Table 1.–191-20-13600 tributary 2 survey data.

Waypoint	Latitude	Longitude	Notes	Stream Width ft	Stream Substrate	Habitat Features	Gradient %	Sample Effort	Sample Results
702	59.969596	-141.707456	Small stream approximately 3 feet wide at the road crossing flows and north potentially into the big river. Area west of Crossing seems like it's up on a terrace and slopes back down towards the big river investigating further downstream to search for potential barrier.		Small Gravel		1-2	EF	
703	59.970191	-141.707258	Small tributary of the main tributary flows west through skunk cabbage into the open logged area. Approx 3 ft wide.		Small Gravel		1-2	EF	2 DV
704	59.970129	-141.707016	Ponded water near the tributary of the main tributary not sure of how flows into channel						
705	59.970536	-141.706285	Lost channel back at ponded area but found it again here, continuing to flow north. Less water than upstream but still flowing.		Small Gravel		1-2	EF	1 SB
706	59.970872	-141.706576	Haunted water that leads down to main tributary in small channel with lots of skunk cabbage stream approximately 2 feet wide, standing water.						
707	59.970886	-141.706101	Back on main tributary approximately 4 feet wide channel becomes more incised, keeps flowing north. Water level increases a bit here.				1-2	EF	1 DV 1 SB
708	59.971287	-141.706299	Channel flows into pond, past which seems to be a very large wetland. No coho caught down to this point. Not sure why coho aren't in stream, no barriers seen down to this point.					EF	
709	59.969443	-141.707745	One CO visual, other caught in net. Caught just upstream of road crossing. Maybe in large pond further upstream.		Small Gravel			EF	2 CO
711	59.96712	-141.711238	Huge pond, very deep. Seems to connect to smaller pond and channelize further downstream to the stream that crosses the road. Looks like great rearing habitat if there's no barrier for fish to get here.					MT	50 SB



Figure 1.—Juvenile coho salmon caught at waypoint 709.



Figure 2.—Looking upstream at waypoint 705.



Figure 3.—Ponded water at waypoint 704.

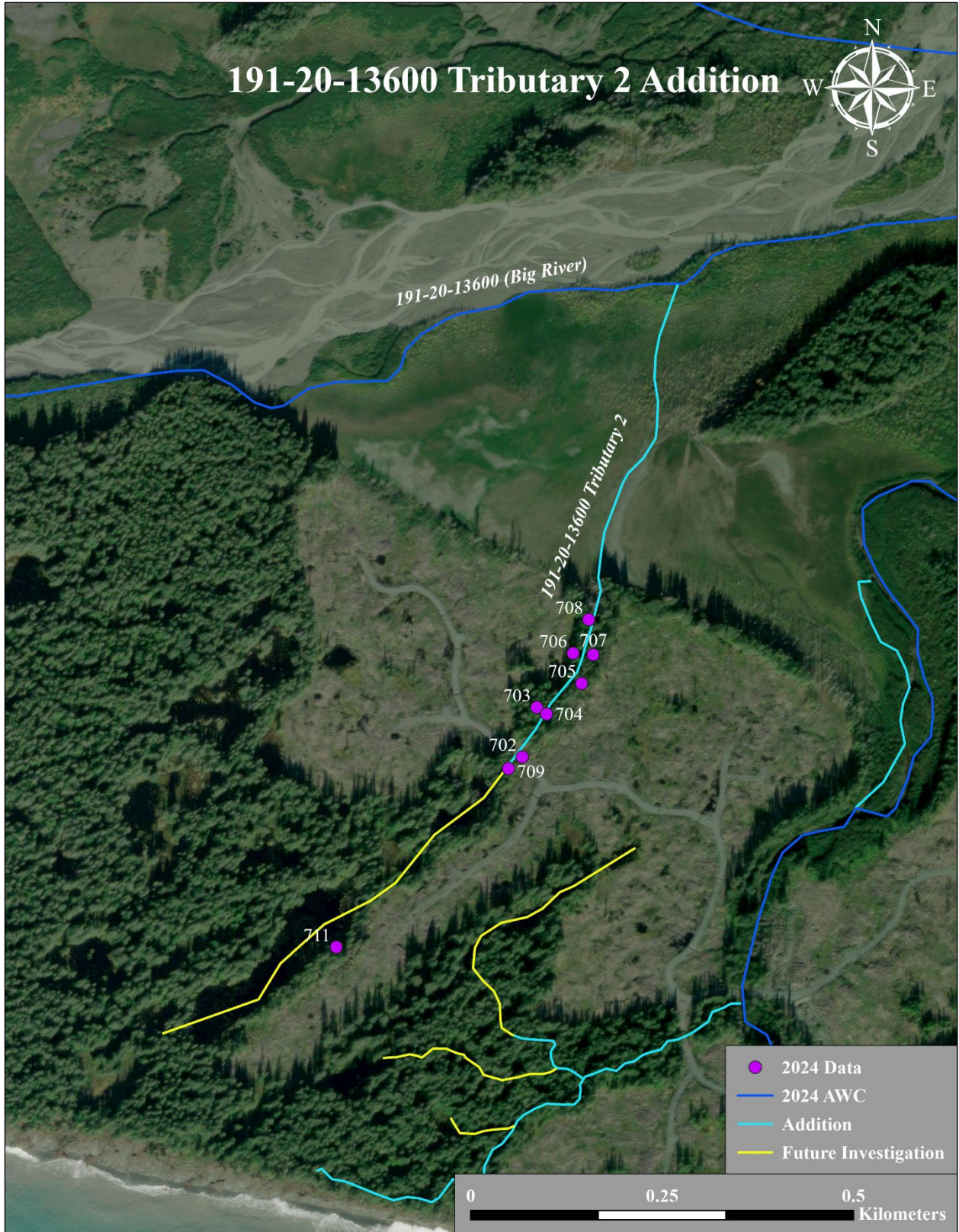


Figure 4. 191-20-13600 tributary 2 addition map.

